

- Base station with support for 802.11a/n/ac (5G Wi-Fi)
- Radio interface with MIMO 2x2 support
- Up to 30 clients on a base station
- Radio module power of up to 28 dBm

Base station

WOP-2ac-LR5 SYNC is designed to organize broadband networks in private housing. The device provides clients with wireless Internet access in the long distances and Triple Play services.

The device is a good choice for wireless network construction in any climatic conditions: in a wide operating temperature range and in high humidity. The device allows connecting different sectoral antennas.

Scalability

WOP-2ac-LR5 SYNC base station is an up-to-date flexible solution that provides extending coverage zone due to the power of its transmitter (up to 28 dBm) and the use of sectoral antennas. It is possible to deploy wireless IT infrastructure quickly and easily by virtue of high-performance hardware, scalability and intuitive interface.

Wireless connection

Due to the support for IEEE 802.11ac standard, the base station WOP-2ac-LR5 SYNC provides data rate of up to 867 Mbps. Furthermore, support for MIMO technology and use of sector antennas make the device an universal solution for broadband access network organization.

Performance

To ensure stable and uninterrupted operation, the device is equipped with high-performance chipsets providing high data processing rates and effective operating via FBWA (Fixed Bandwidth Wireless Access) technology.

Inter-sector synchronization

WOP-2ac-LR5 SYNC devices support inter-sector synchronization mechanism. This functionality allows to construct multi-sector bases in conditions of limited frequency resource or use adjacent frequencies of neighboring sectors.



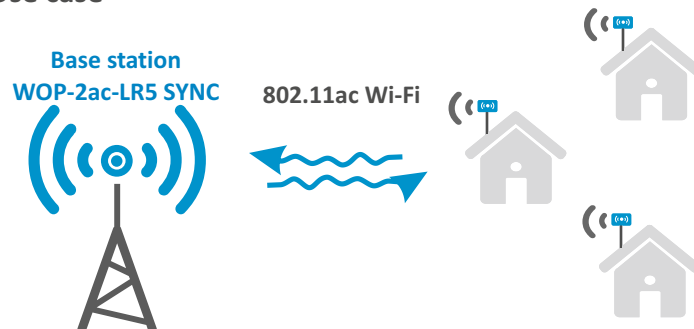
Security

Up-to-date authentication technologies provide a secure connection. The device uses WPA2 encryption and centralized authorization through a RADIUS server (WPA2-Enterprise). Division of access rights by roles with the possibility of authentication by local account, as well as via the RADIUS server is provided for the management of the base station.

Power supply

The PoE+ technology makes it possible to install the equipment anywhere, regardless of the power supply location, reduces total cost by discarding power cables and makes installation easier and faster.

Use case



WOP-2ac-LR5 SYNC interfaces configuration

Name	Ethernet	SFP	SMA connectors for antennas
WOP-2ac-LR5 SYNC	1x1G Combo		2

Features and capabilities

Interfaces

- 1 Combo port 10/100/1000BASE-T (RJ-45)/100/1000BASE-X (SFP)
- 2 SMA connectors (female) for external antennas (Omni, sectoral, panel, etc.)
- Wi-Fi 5-6 GHz IEEE 802.11a/n/ac

WLAN capabilities

- Support for IEEE 802.11a/n/ac
- Data aggregation, including A-MPDU (Tx/Rx) and A-MSDU (Rx)
- Priorities and packet planning based on WMM
- Dynamic frequency selection (DFS)
- Hidden SSID support
- 4 virtual access points
- Support for MAC ACL
- External access points detection
- APSD
- Spectrum analyzer
- Support for wireless bridges (WDS)
- Support for fixed center frequency
- Inter-sector synchronization (PTP)

Network functions

- Automatic negotiation of speed and duplex mode, switching over MDI and MDI-X modes
- Support for VLAN (Access, Trunk, General)
- VLAN mapping
- DHCP client
- Support for NTP
- Support for Syslog
- DHCP snooping
- IGMP snooping
- BPDU filtering
- Support for Ping Watchdog

QoS functions

- Bandwidth limiting for each SSID
- Client data rate limiting for each SSID
- Changing WMM parameters for radio interface
- Support for prioritization by CoS, DSCP and VLAN ID

Security

- Centralized authentication via RADIUS server (WPA/WPA2 Enterprise)
- WPA/WPA2 encryption
- 64/128/152-bit WEP encryption of data

Wireless interface parameters

- Frequency range 5170-6160 MHz
- BPSK, QPSK, 16QAM, 64QAM, 256QAM modulation
- Support for MIMO 2x2
- Bandwidth: 5, 10, 20, 40, 80 MHz

Operating channels¹

- 802.11a/n/ac: 36-230 (5170-6160 MHz)

Data rate²

- 802.11a: up to 54 Mbps
- 802.11n: up to 300 Mbps
- 802.11ac: up to 867 Mbps

Receiver sensitivity

- 5-6 GHz: up to -94 dBm

Maximum power of the transmitter¹

- 5-6 GHz: 28 dBm

Configuration

- Remote control via Telnet, SSH
- Web interface
- CLI
- NETCONF
- SNMP (Monitoring)

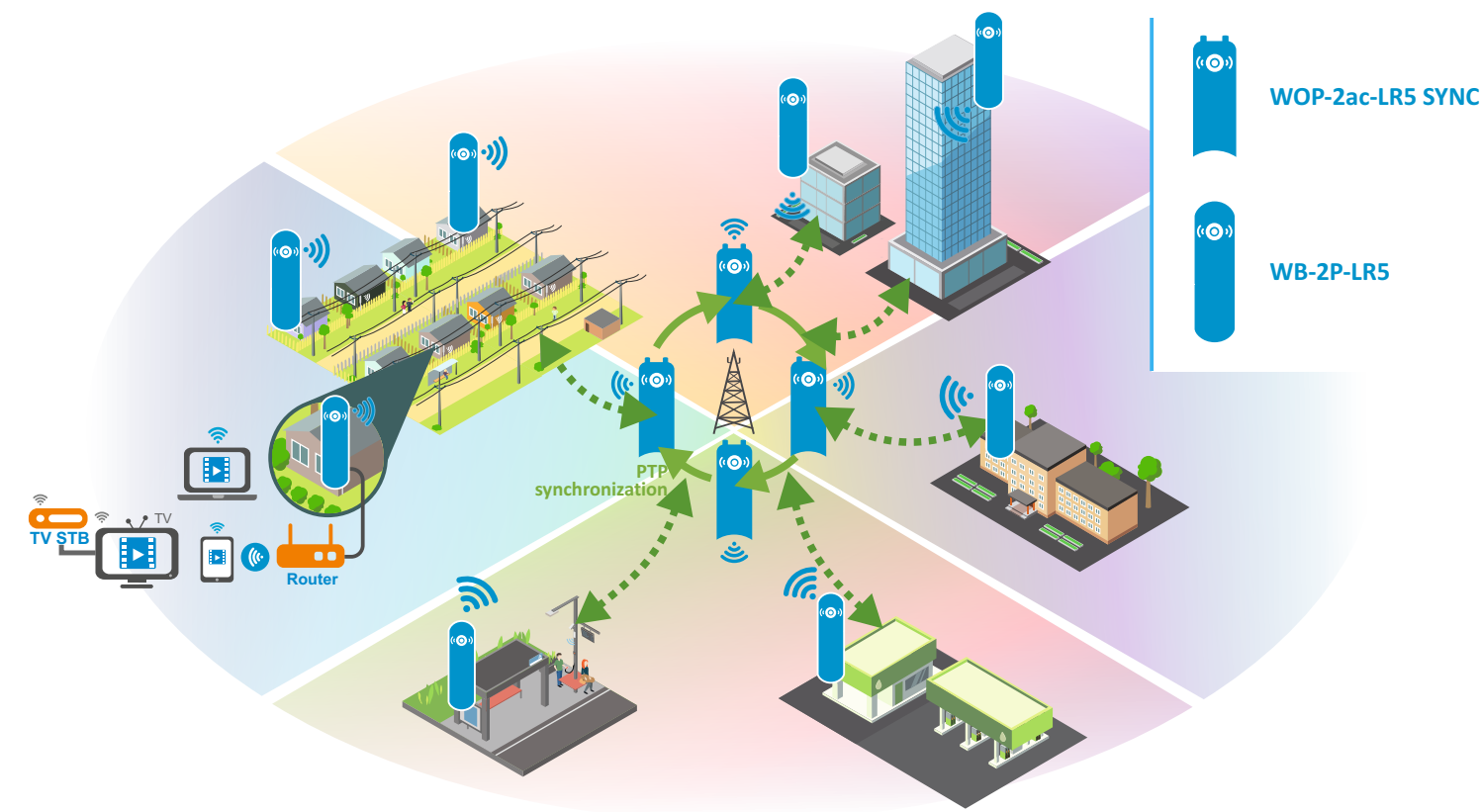
Physical specifications

- Power consumption up to 16 W
- 32 MB Flash
- 128 MB RAM
- Power supply:
 - PoE+ 48V/56V (IEEE 802.3at-2009)
- Operating temperature from -45°C to +65°C
- IP54 protection level
- Dimensions (WxHxD): 88x232.5x47 mm
- Weight: 0.39 kg
- Pole mount

¹The number of channels and the value of the maximum output power will vary according to the rules of radio frequency regulation in your country.

²The maximum wireless data rate is defined according to IEEE 802.11n/ac standards. The real bandwidth will be different. Conditions under which a network operates, environmental factors (including a volume of network traffic), network service data, building materials and constructions might decrease the real bandwidth. Environmental factors might also influence a network coverage range.

Use case



Ordering information

Name	Description
WOP-2ac-LR2 SYNC	Base station WOP-2ac-LR2 SYNC, mounting kit is included


Related products

Sector antennas MIMO 2x2

Power injector PoE+

Contact us

About Eltex


+7 (383) 274 10 01
+7 (383) 274 48 48


eltex@eltex-co.ru


www.eltex-co.com

Eltex company is a leading Russian developer and manufacturer of telecommunication equipment with 25 years of history. Integrity of solutions and seamless integration capability into Customer infrastructure is a priority area of company development.